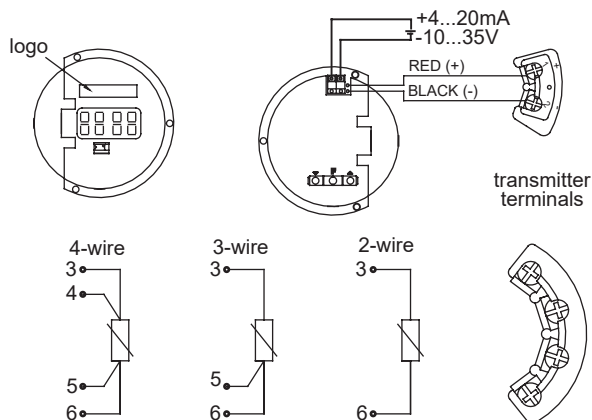
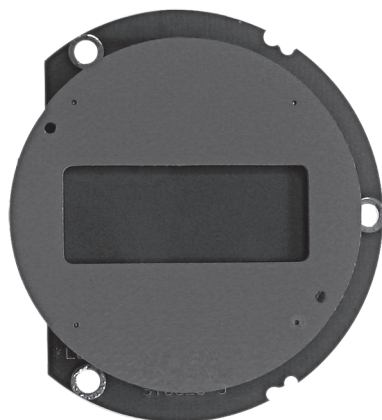


LCD DISPLAY - type ST0028 (ST0028-5 or ST0028-6 ATEX)



TECHNICAL DATA PERFORMANCES

Reference operating condition	23°C
Max. measurement error	0,1% of the programmed range +/- 1 digit
Influence of ambient temperature (temp. drift)	100ppm / °C measur. range
Input signal	4...20 mA
Loop drop out	max. 2,5 V
Digits	4 digits 7 segments LCD display
Visible dimension	33,4×13,2 mm
Display characteristics	TN positive transreflective, visual angle: h 6 : 00
Data storage	EEPROM
Storage period	10 years (not powered)
Mounting	4 holes Ø3 mm on Ø68 mm

OPERATING CONDITIONS

Ambient temperature	-20...70°C
Storage temperature	-30...80°C
Moisture	25 to 95% not condensating
Ingress protection	IP 20
Electromagnetic compatibility	EMC according to EN 50081-1 and EN-ISO 082-1 with instrument properly installed

FUNCTIONALITIES

Parameters	zero, span, decimal point
Indication limits	-1999 to +9999
Programmable range	free, within the indication limits
Decimal point position	0, 1, 2, 3 decimals
Functions and readings	Filter on measurement readings, over range limits, resolution
Filter on readings	average on 1 to 8 measurement readings
Update of readings	0,25 to 2 s, according to the filter on readings
Over-load limits	3,6 to 22 mA
Resolution	selectable from 1 to 10 points
Calibration points	zero (4 mA) and span (20 mA), stored on EEPROM

MECHANICAL CONSTRUCTION

Electrical loop connection	2 terminals, max. wire section 1 mm ² (AWG 16)
Connection to transmitter	2 wires, max. 0,5 mm ²
Dimension	diameter: Ø59; thickness: 17 mm
Weight	90 g
Applying	XD-AD.dia + fixing kit KDST2 DANAWdia + fixing kit KDST1

Ordering:

ST0028-5 - standard version
ST0028-6 ATEX - II 1G EEx ia IIC T5

