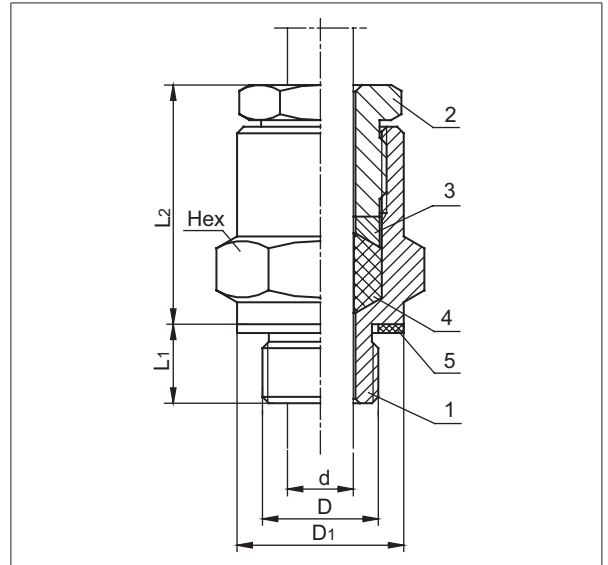


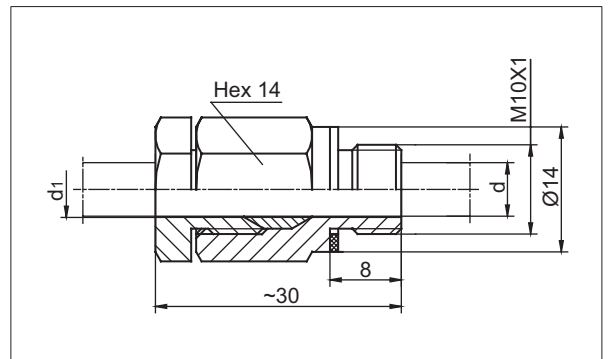
COMPRESSION FITTING - type UG 2

TYPE	DIAMETER OF SHEATH d [mm]	TYPE OF THREAD D	DIMENSIONS [mm]			
			D ₁	Hex	L ₁	L ₂
UG 2-12	Ø12	G½	Ø34	36	18	~59
UG 2-15	Ø15	G½	Ø34	36	18	~59
UG 2-15	Ø15	G¾	Ø38	41	18	~59
UG 2-22	Ø22	G1	Ø45	46	25	~67
UG 2-26	Ø26	G¾	Ø55	55	30	~86
UG 2-32	Ø32	G¾	Ø55	55	30	~86
Materials of elements	1. Steel 1.0715 zinc-plated. 2. Steel 1.0715 zinc-plated. 3. Steel 1.0715 zinc-plated. 4. Teflon PTFE or Graphite 5. BELPA (non asbestos)					
Max temperature	250°C (Teflon); 450°C (Graphite)					
Gas tightness	to 1 bar					
Ordering sample: Compression fitting UG2-15- G¾ -teflon						



COMPRESSION FITTING - type UG 3

TYPE	DIAMETER OF SHEATH d [mm]	d ₁ [mm]
UG 3 - 3	Ø3	3.2
UG 3 - 4.5	Ø4.5	4.7
UG 3 - 6	Ø6	6.2
Material of elements	1.4541 (X6CrNiTi1810)	
Washer	BELPA (non asbestos)	
Max temperature	500°C	
Gas tightness	to 1 bar (500°C)	
Ordering sample: Compression fitting UG 3 - 6		



COMPRESSION FITTING - type UG 4

TYPE	DIAMETER OF SHEATH d [mm]	Type of thread D	DIMENSIONS [mm]	
			d ₁	Hex
UG 4 - 3	Ø3	M10×1	3.2	14
UG 4 - 4.5	Ø4.5		4.7	
UG 4 - 6	Ø6		6.2	
UG 4 - 8	Ø8	M12×1	8.2	17
Material of elements	1,2,1.4028 (X30Cr13) 3. 1.4541 (X6CrNiTi1810) 4. BELPA (non asbestos)			
Max temperature	500°C			
Gas tightness	to 1 bar (500°C)			
Ordering sample: Compression fitting UG 4 - 6				

