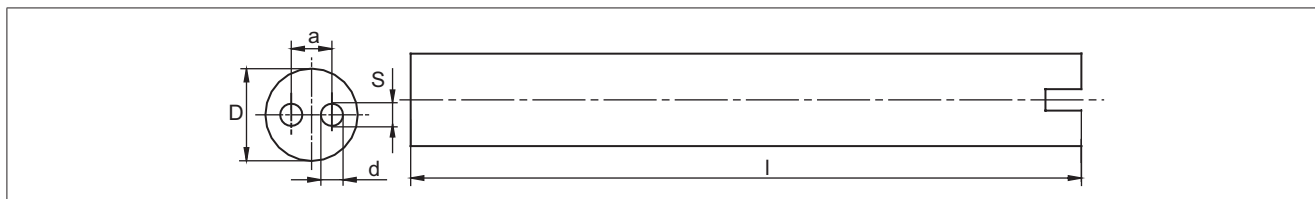
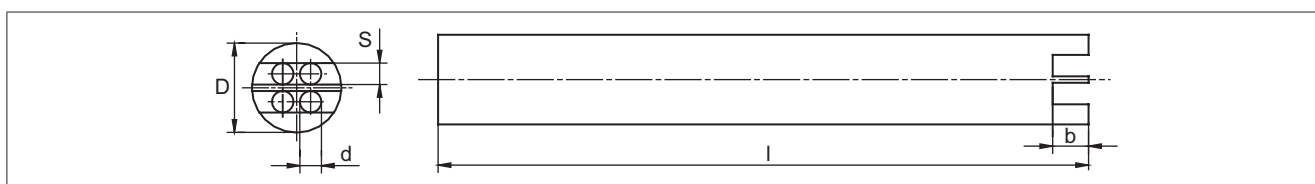


TWO HOLES ROUND INSULATOR



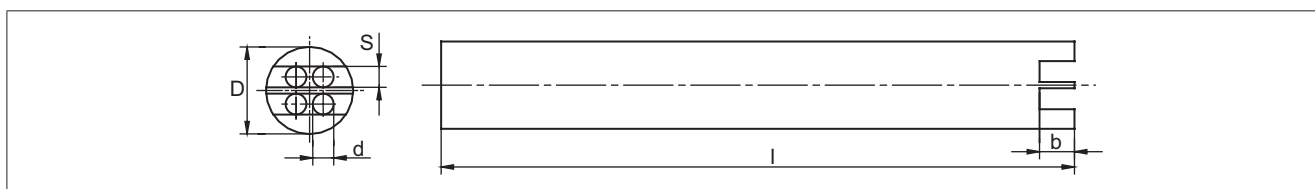
DIMENSIONS [mm]					MATERIAL	ORDER No.	WITH SLOT
D	d	l	s	b			
1.9	0.6	100	0.6	1.2	C 610 1400°C	4 - L1687.1	SL
1.9	0.6	200	0.6	1.2		4 - L1687.2	SL
2.2	0.5	1000	0.5	1.0		4 - L1687.3	SL
2.7	0.8	500	0.8	1.6		4 - L1687.4	SL
3.0	0.7	1000	0.7	1.4		4 - L1687.5	SL
4.0	1.0	520	1.0	2.0		4 - L1687.6	SL
4.0	1.0	1020	1.0	2.0		4 - L1687.7	SL
5.5	1.8	25	1.8	3.6		4 - L1687.8	SL
5.5	1.8	205	1.8	3.6		4 - L1687.9	SL
5.5	1.8	565	1.8	3.6		4 - L1687.10	SL
5.5	1.8	1060	1.8	3.6		4 - L1687.11	SL
12.0	4.0	50	4.0	8.0		4 - L1687.12	SL

FOUR HOLES ROUND INSULATOR



DIMENSIONS [mm]					MATERIAL	ORDER No.	WITH SLOT
D	d	l	s	b			
2.6	0.8	1000	0.8	1.6	C 610 1400°C	4 - L1688.1	SL
3.5	1.0	20	1.0	2.0		4 - L1688.2	SL
4.5	1.2	1500	1.2	2.4		4 - L1688.3	SL
5.5	1.2	560	1.2	2.4		4 - L1688.4	SL
5.5	1.2	770	1.2	2.4		4 - L1688.5	SL
5.5	1.2	1060	1.2	2.4		4 - L1688.6	SL
5.8	1.3	1500	1.3	2.6		4 - L1688.7	SL
8.5	1.5	560	1.5	3.0		4 - L1688.8	SL
8.5	1.5	770	1.5	3.0		4 - L1688.9	SL
8.5	1.5	1060	1.5	3.0		4 - L1688.10	SL
8.5	1.5	1460	1.5	3.0		4 - L1688.11	SL
8.5	1.5	2060	1.5	3.0		4 - L1688.12	SL

FOUR HOLES ROUND INSULATOR



DIMENSIONS [mm]					MATERIAL	ORDER No.	WITH SLOT
D	d	l	s	b			
4.0	1.0	560	1.0	2.2	C 799 1800°C	4 - L1688.14	SL
4.0	1.0	1220	1.0	2.2		4 - L1688.15	SL
8.5	1.5	560	1.5	3		4 - L1688.16	SL
8.5	1.5	770	1.5	3		4 - L1688.17	SL
8.5	1.5	1060	1.5	3		4 - L1688.18	SL
8.5	1.5	1460	1.5	3		4 - L1688.19	SL
8.5	1.5	2060	1.5	3		4 - L1688.20	SL