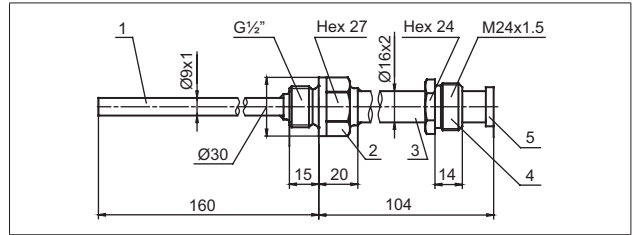


THERMOWELLS with thread process connection - type GNS



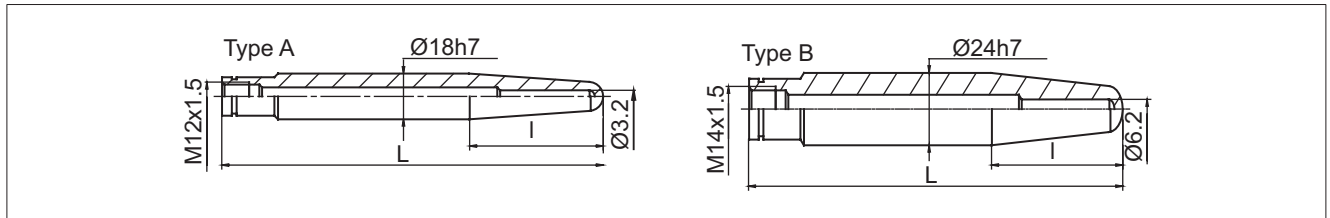
| RELATED COMPONENTS: | |
|--|--|
| TYPE | |
| Connection heads with M24x1.5 threads | |
| Instrument Housings with M24x1.5 threads | |



| THERMOWELL TYPE | MATERIAL |
|-----------------|-------------------------------|
| GNS | 1,2,3 - 1.4541 (X6CrNiTi1810) |

Custom modifications are available.

SOLID MACHINED THERMOWELL with welding neck

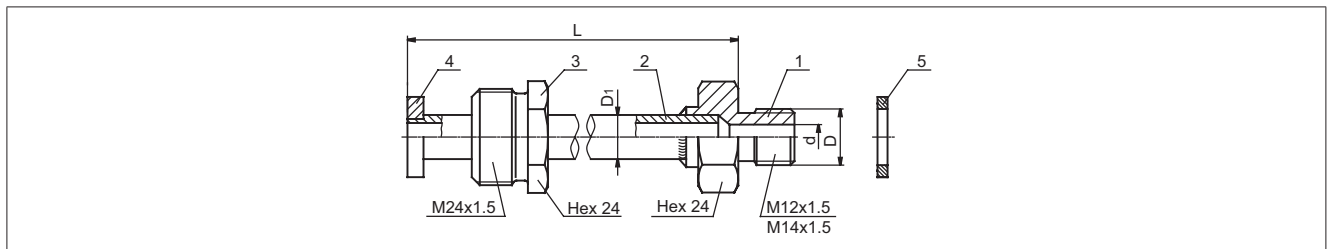


| TYPE | DIMENSIONS [mm] | | MASS [KG] | MATERIAL |
|--------|------------------------|-------------------|-----------|--|
| | LENGTH OF THERMOWELL L | IMMERSION DEPTH L | | |
| SW - A | 100 | 35 | 0.106 | 1.7335 (13CrMo44) 1.7380 (10CrMo919) 13HMF |
| | 140 | 65 | 0.150 | |
| | 200 | 65 | 0.256 | |
| SW - B | 140 | 65 | 0.342 | |
| | 200 | 65 | 0.555 | |
| | 300 | 65 | 0.860 | |
| | 400 | 65 | 1.165 | |

Ordering: Thermowell SW - A - L - Material SW - B - L - Material
 Ordering example: Thermowell SW - A - 140 - 1.7380

Custom modifications are available.

EXTENSION CONNECTING PIPE for THERMOWELL with welding neck



| DIMENSIONS [mm] | | | | MATERIAL | ORDER No. |
|-----------------|----------------|-------|-----|--------------------------|-----------|
| D | d _i | L | d | | |
| M12x1.5 | Ø11 | 177.3 | 3.2 | 1 - 1.7335 2 - 1.4541 | 1.4541 |
| M14x1.5 | Ø11 | 178.3 | 6.2 | 1, 2 - 1.4541 | |
| M12x1.5 | Ø14 | 177.3 | 3.2 | 1 - 1.4541 2 - 1.4002 | |

Custom modifications are available.