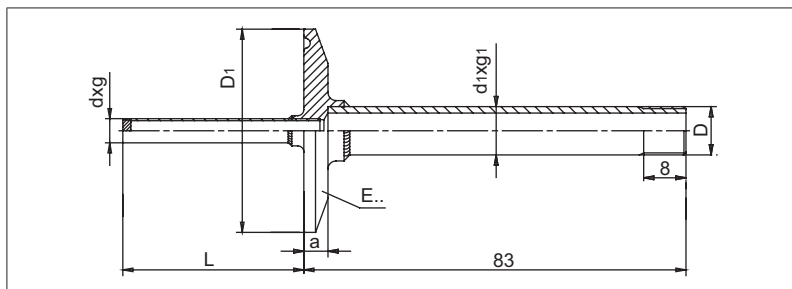


SANITARY, FOOD and PHARMACY THERMOWELLS - type SA



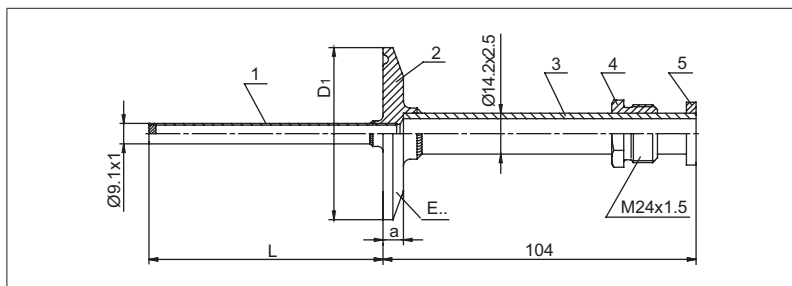
RELATED COMPONENTS:	
TYPE	
Connection heads	
Instrument Housings	

SIZE OF TUBE DN	D ₁ [mm]	a [mm]	TYPE OF CAP
1" and 1½"	50.5	6.4	E1
2"	64	6.4	E2
2½"	77.5	6.4	E2.5
3"	91	6.4	E3

THERMOWELL TYPE	DIMENSION [mm]					MATERIAL
	d x g	E..	d ₁ x g ₁	D	L	
SA 6	Ø6 x 0.5	E1, E2, E2.5, E3	Ø10.2 x 1.6	M10x1	on request	1.4541 (X6CrNiTi1810)
SA 8	Ø8 x 0.6	E1, E2, E2.5, E3	Ø12 x 1.6	M12x1	on request	1.4541 (X6CrNiTi1810)

Ordering: Thermowell SA6 - E.. - L
Ordering example: Thermowell SA6 - E1 - 100

SANITARY, FOOD and PHARMACY THERMOWELLS - type SAT



RELATED COMPONENTS:	
TYPE	
Connection heads	
Instrument Housings	

SIZE OF TUBE DN	D ₁ [mm]	a [mm]	TYPE OF CAP
1" and 1½"	50.5	6.4	E1
2"	64	6.4	E2
2½"	77.5	6.4	E2.5
3"	91	6.4	E3

THERMOWELL TYPE	DIMENSION [mm]		MATERIAL
	E..	L	
SAT	E1, E2, E2.5, E3	on request	1, 2, 3 - 1.4541 (X6CrNiTi1810)

Ordering: Thermowell SAT - E.. - L
Ordering example: Thermowell SAT - E1 - 160