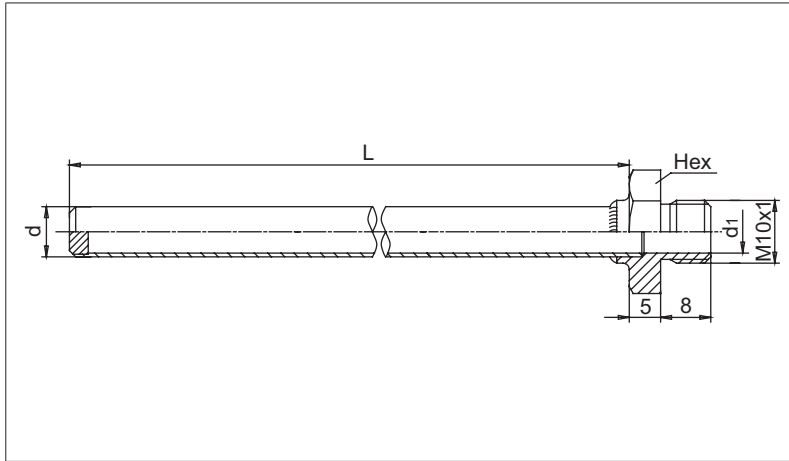


THERMOWELL with THREAD PROCESS CONNECTION - type G1

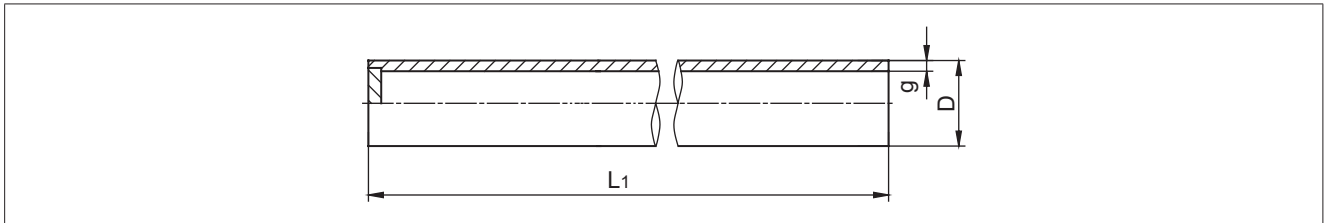


RELATED COMPONENTS:	
TYPE	
Connection heads with M10x1 threads	
Instrument Housings with M10x1 threads	

TYPE	DIMENSION [mm]				MATERIAL
	D	D ₁	HEX	L	
G1	Ø5	Ø4	14	150	1.4541 (X6CrNiTi1810)
	Ø6	Ø5	14	200	
	Ø8	Ø6,8	17	245	

Ordering: **Thermowell G1-d-L**
Ordering example: **Thermowell G1-Ø5-150**

HEAT RESISTING STEEL THERMOWELLS - type U22

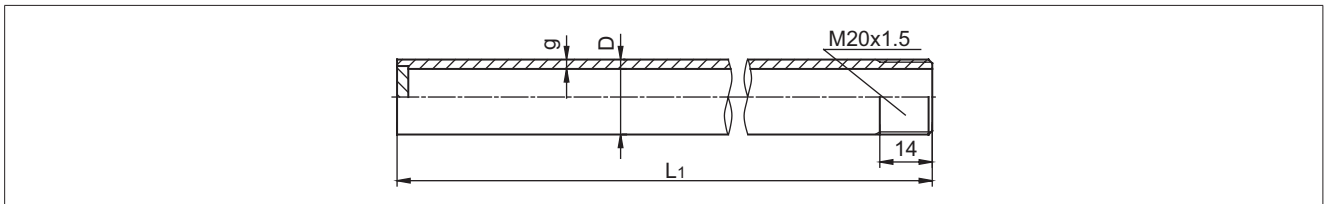


THERMOWELL TYPE	DIMENSION DXG [mm]	DIMENSIONS [mm]		MATERIAL	COATING	MAX WORK TEMPERATURE IN AIR [°C]
		NOMINAL LENGTH OF SENSOR L	L ₁			
U22	Ø22x2	500, 710, 1000, 1400, 2000	L + 20	1.7335 (13CrMo44)	- paint * - enamel (Em)	550
				1.4762 (X10CrAl24)	-	1200
				1.4841 (X15CrNiSi2520)	-	1150

Ordering: **Thermowell U22-L-Material**
Ordering example: **Thermowell U22-1000-1.4841**

* - temporary protection, coating is burned at 550°C

HEAT RESISTING STEEL THERMOWELLS - type U20



THERMOWELL TYPE	DIMENSION DXG [mm]	DIMENSIONS [mm]		MATERIAL	COATING	MAX WORK TEMPERATURE IN AIR [°C]
		NOMINAL LENGTH OF SENSOR L	L ₁			
U20	Ø20x2	400, 500, 630, 800, 1000, 1250, 1600, 2000	L + 14	1.7335 (13CrMo44)	- paint* - enamel (Em)	550
				1.4762 (X10CrAl24)	-	1200
				1.4841 (X15CrNiSi2520)	-	1150

Ordering: **Thermowell U20-L-Material**
Ordering example: **Thermowell U20-400-1.4762**

* - temporary protection, coating is burned at 550°C